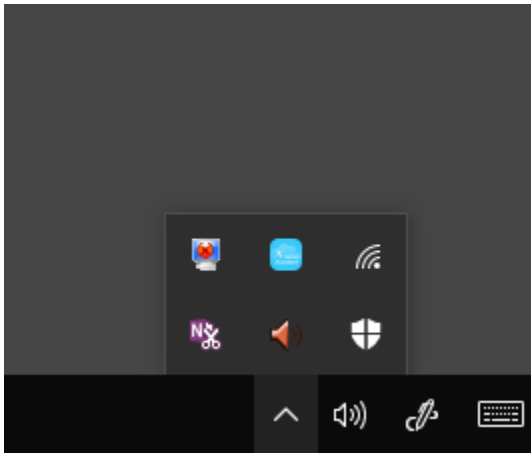


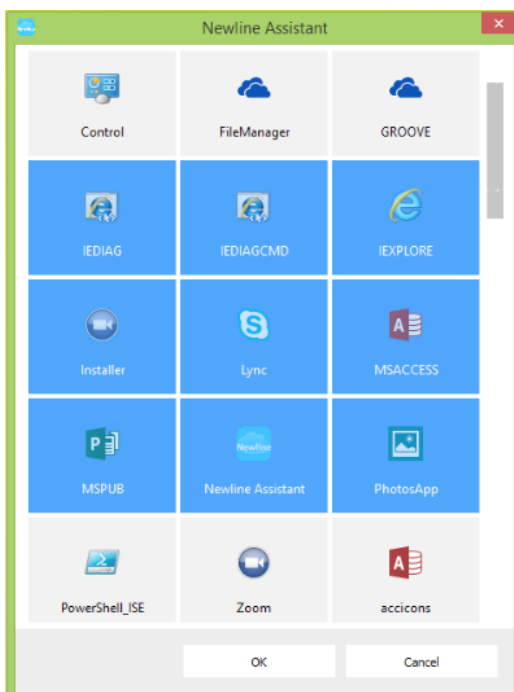
How to add X Series Assistant Applications

Add Applications on Windows System

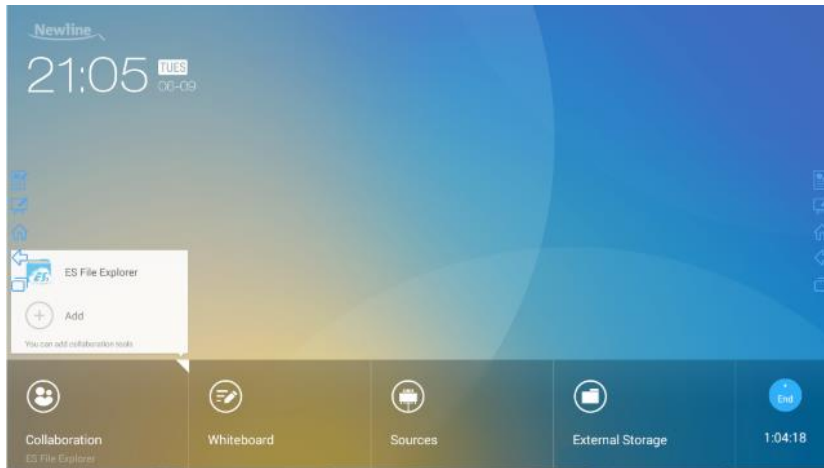
1. Select the PC source from the sources tab to enter the Windows Operating System.
2. Run the X Series Assistant application on Windows system, and select applications to be added in the displayed **X Series Assistant** window. (If you receive the following message “An Instance is already running”, please select it from the system tray.




3. Select the desired programs and hit Ok.



How to add X Series Assistant Applications



4. Click  to return to the home page. Click the triangle at the upper right corner of **Collaboration** and select **Add** on the displayed menu. The customization page is displayed.
5. Select the desired programs to add as short cuts. You can have a maximum of 3 active short cuts.